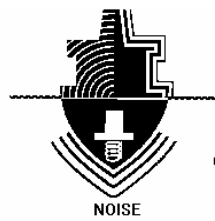


Noise Control
Engineering, Inc.

MAKING



QUIETLY

799 MIDDLESEX TNPK.
BILLERICA MA 01821-3445
PHONE: 978-670-5339
FAX: 978-667-7047
E-mail: noise@tiac.net

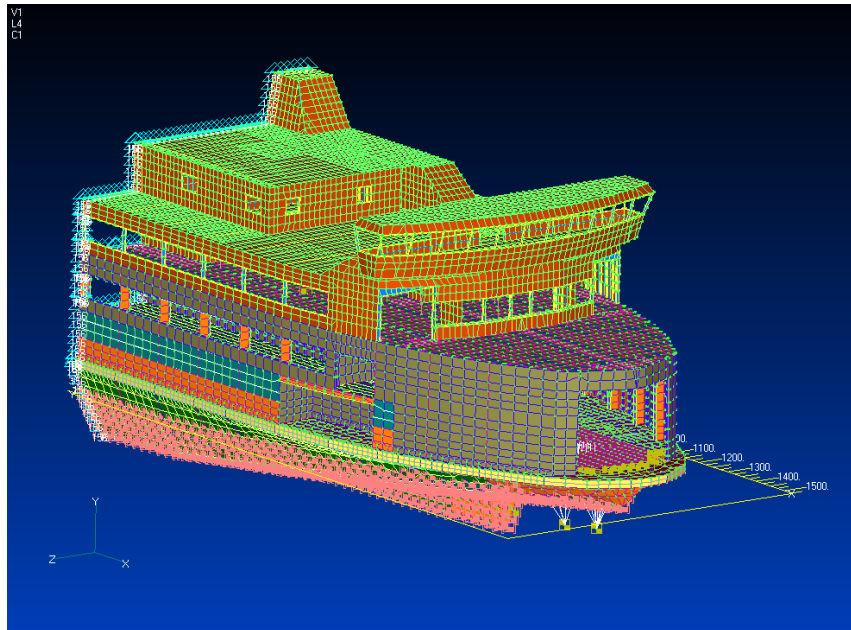
PRESS RELEASE

FOR IMMEDIATE RELEASE

CONTACT: MICHAEL BAHTIARIAN

TO:	Distribution
DATE:	December 20, 2005

NOISE CONTROL ENGINEERING COMPLETES ACOUSTIC ASSESSMENT OF MARTHA'S VINEYARD FERRY



Finite Element Model Used by NCE to Evaluate Vibration

(Billerica, Mass), The engineering consulting firm, **Noise Control Engineering, Inc** (NCE) has recently completed sound and vibration analyses of the new 255 foot, double-ended ferry for the **Steamship Authority** (SSA). The ferry will operate between Woods Hole and the island of Martha's Vineyard in Cape Cod Massachusetts. The ferry is being designed and built by **VT Halter Marine** in Pascagoula, MS and NCE is under contract to them. NCE has conducted three major studies for Halter. First an airborne noise prediction was performed using the new *Designer-NOISE™*, noise prediction software, recently released by NCE and **Proteus Engineering**. NCE has also calculated the sound levels from all major HVAC systems in the ferry. Lastly, NCE completed a full hull and superstructure Finite Element Analysis. This analysis was performed using MAESTRO and NE/NASTRAN finite element codes. The assessment evaluated compliance with ABS "COMF" vibration requirements from the "Guide for Passenger Comfort on Ships". NCE specializes in shipboard noise and vibration control.